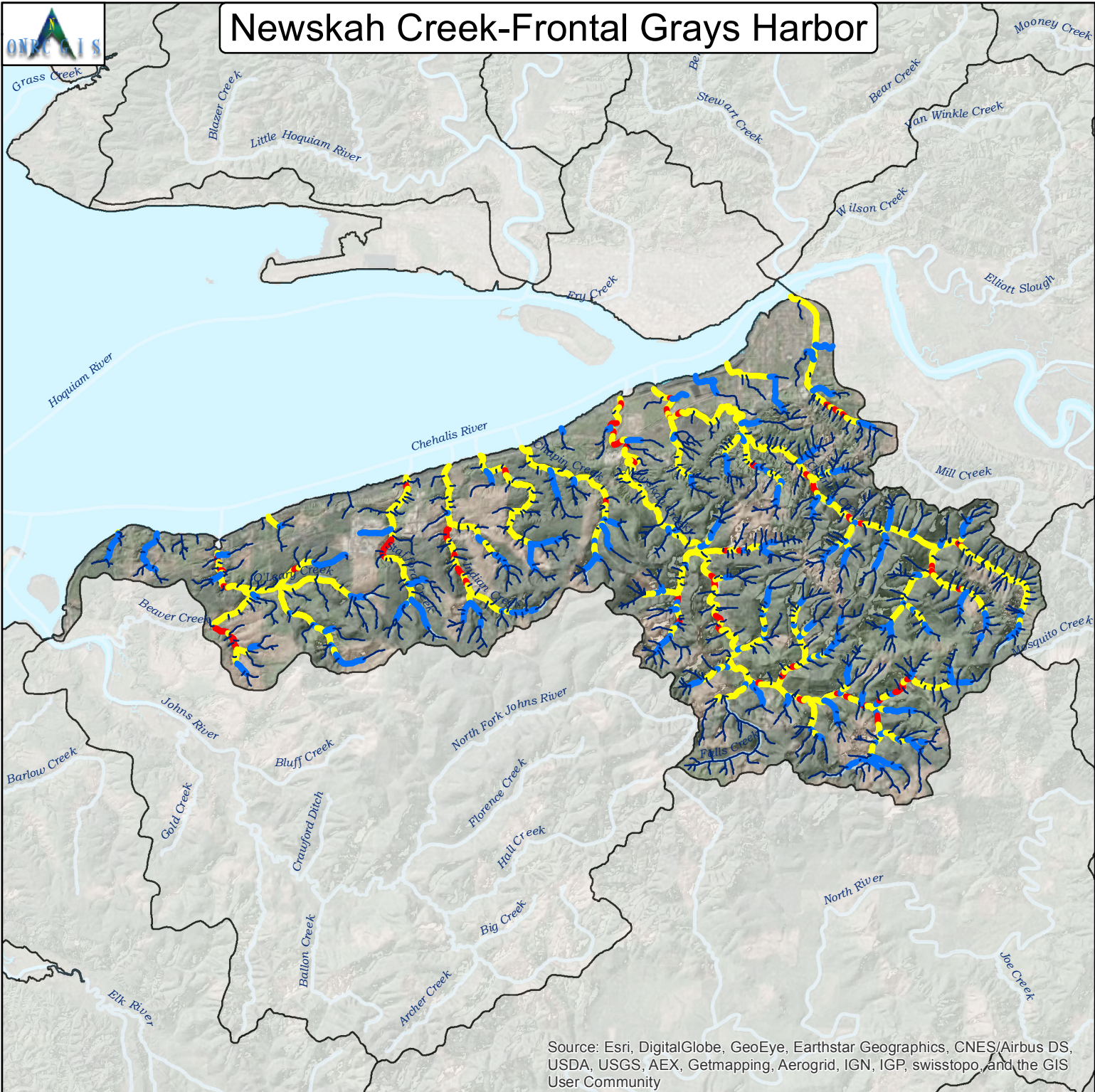
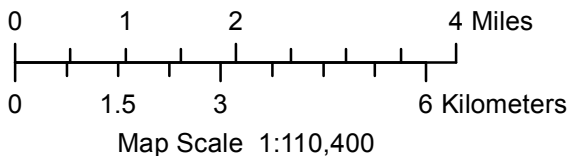


Newskah Creek-Frontal Grays Harbor



Maps By Keven Bennett
UW | ONRC GIS
11/18/2015

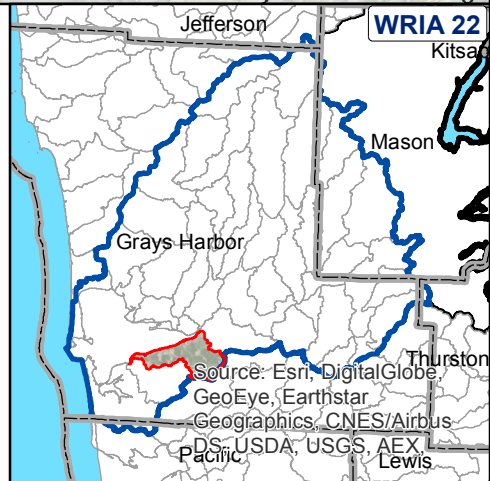


Intrinsic Potential Scoring for Steelhead Habitat

—	0	
—	> 0 to 0.35	Low
—	> 0.35 to 0.75	Medium
—	> 0.75 to 1.00	High

Burnett, 2007

WASHINGTON COAST SUSTAINABLE SALMON PARTNERSHIP
UNIVERSITY OF WASHINGTON ONRC Natural Resources Center
WILD SALMON CENTER



Projection: UTM NAD83 10N Meters
For Detailed Documentation Go To:
http://www.onrc.washington.edu/MarinePrograms/IPOuterCoast/PostPhaseII_MapPortal.html